

Install SQL Server 2017

Last Modified on 01/12/2024 1:53 pm PST

Summary

This document instructs you on how to install SQL 2017.

Table of Contents

- [Run SQL Server Setup Installer](#)
- [Move Database Files](#)
- [Attach Database Files](#)

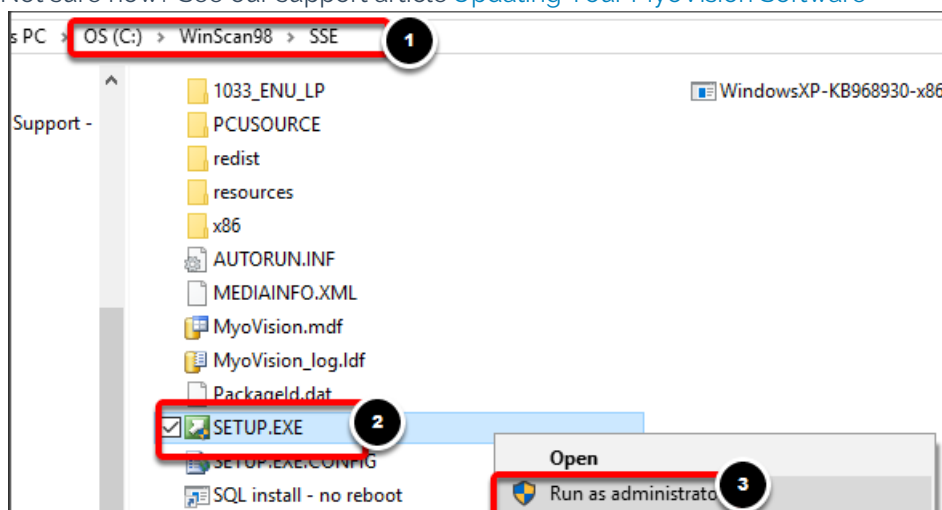
Before you Begin

1. Make sure the Windows account you are logged into has Administrator privileges
 - Check [Administrator Privileges](#) if you are unsure.
2. **IMPORTANT:** Make sure Windows 10 is fully updated before installing MyoVision.
 - To check if you are fully updated, go to the Microsoft support article here:
<https://support.microsoft.com/en-us/help/4027667/windows-10-update>
3. Download the latest MyoVision installer at <https://www.myovision.com/download.html>
4. If you are running an older version of SQL Server and are trying to upgrade to SQL Server 2017, see our support article [Upgrade to SQL Server 2017](#)

How to Install SQL Server 2017

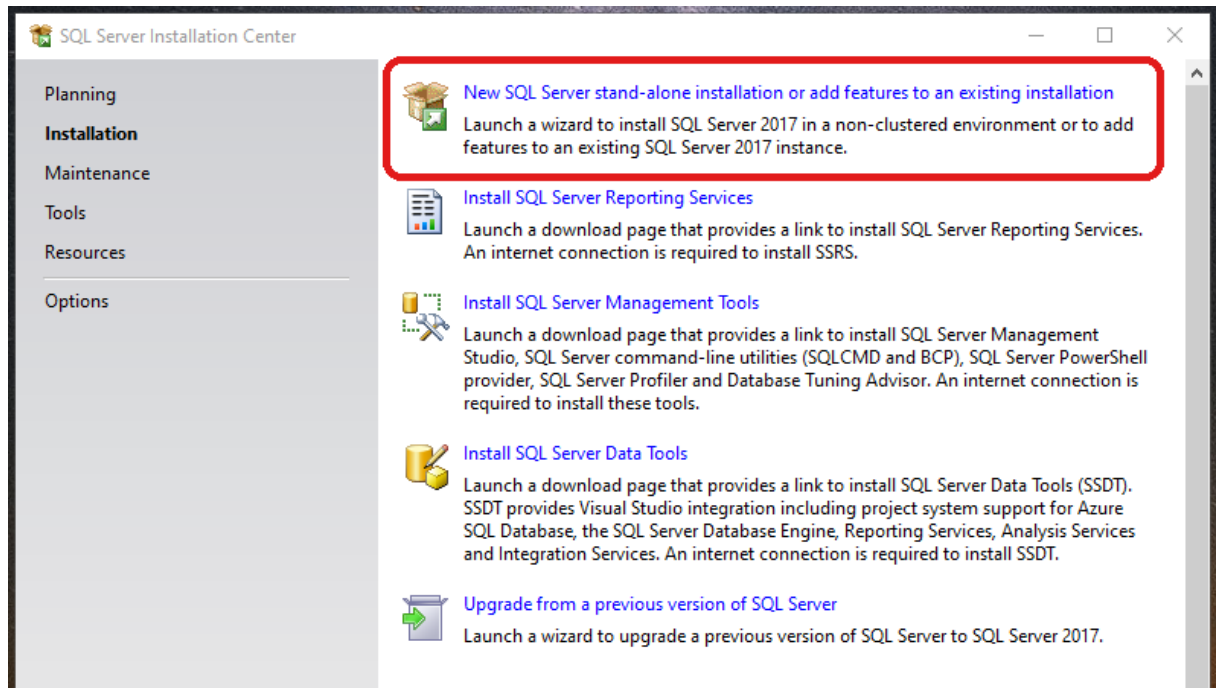
1. Run SQL Server Setup File

- Navigate to **C:\WinScan98\SSE** (Do not use SSE2014). Right-click on "**SETUP.EXE**" and select "**Run as administrator**"
 - If you do not have the **SSE Folder**, update your software first
 - Not sure how? See our support article [Updating Your MyoVision Software](#)



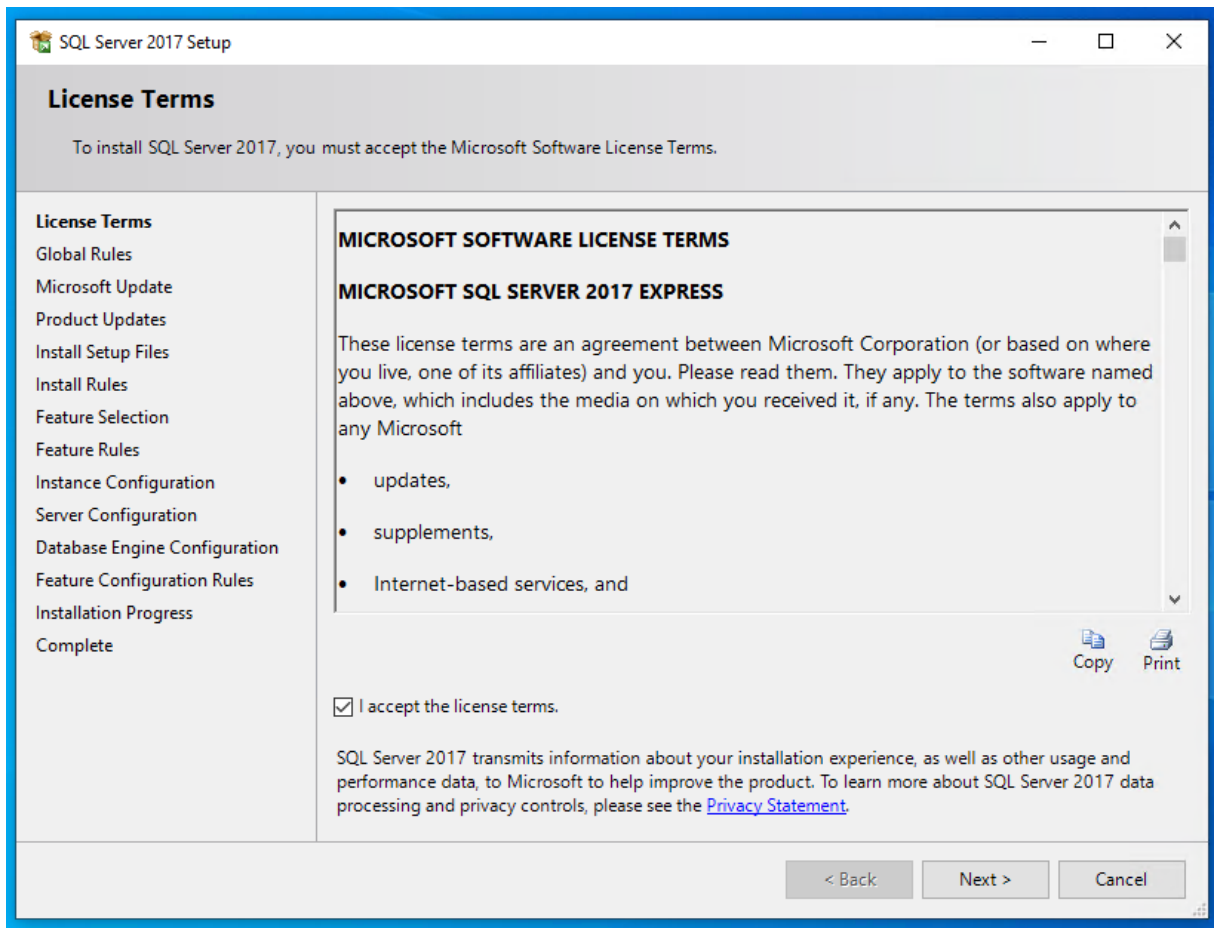
2. Select Installation Type

- Once the Installer opens, select the "New SQL Server stand-alone installation..." option
- **NOTE:** Make sure you are installing SQL 2017 and not SQL 2008. If the installer window says SQL 2008, rename the SSE folder to SSE2008, then download and run the MyoVision installer to install the proper SQL Setup files.

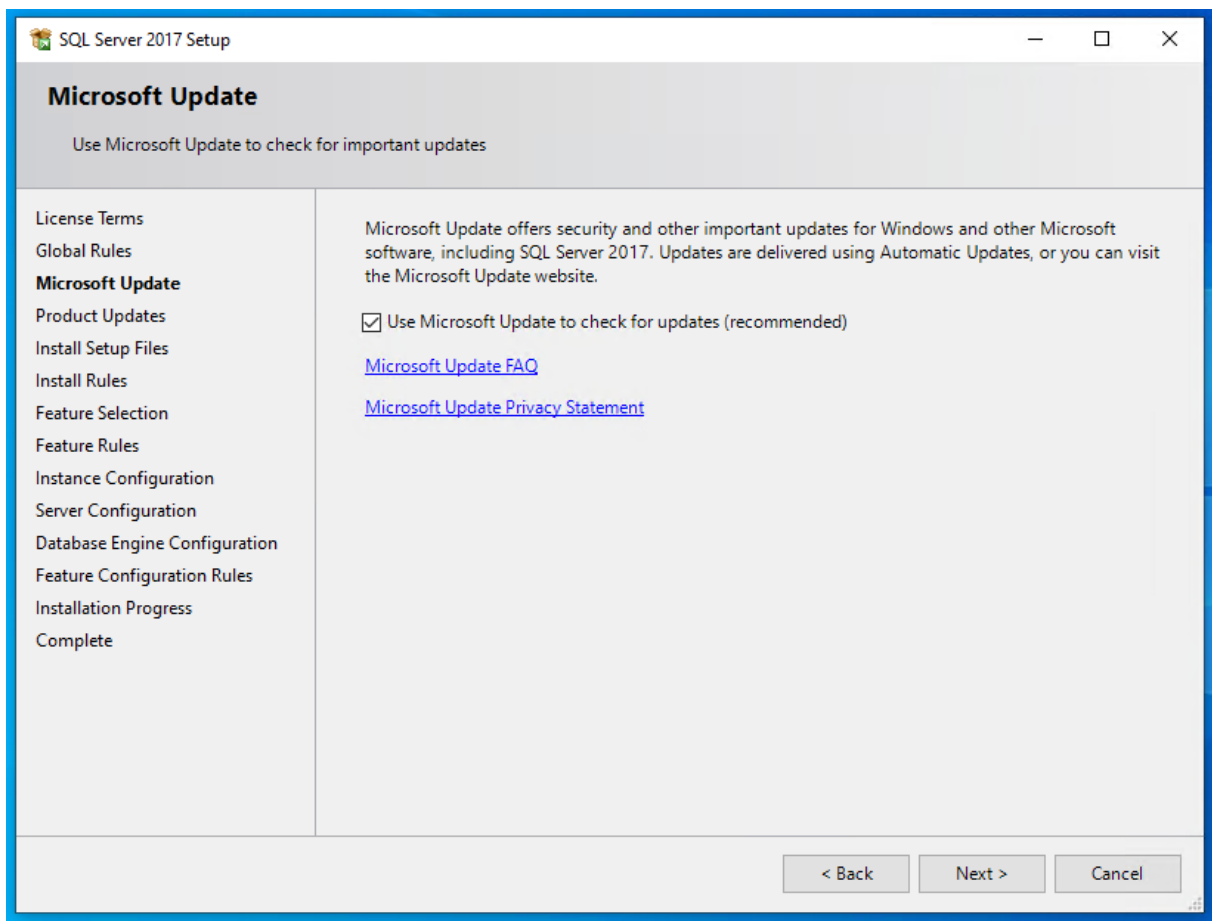


3. Click Next Through the Following Screens

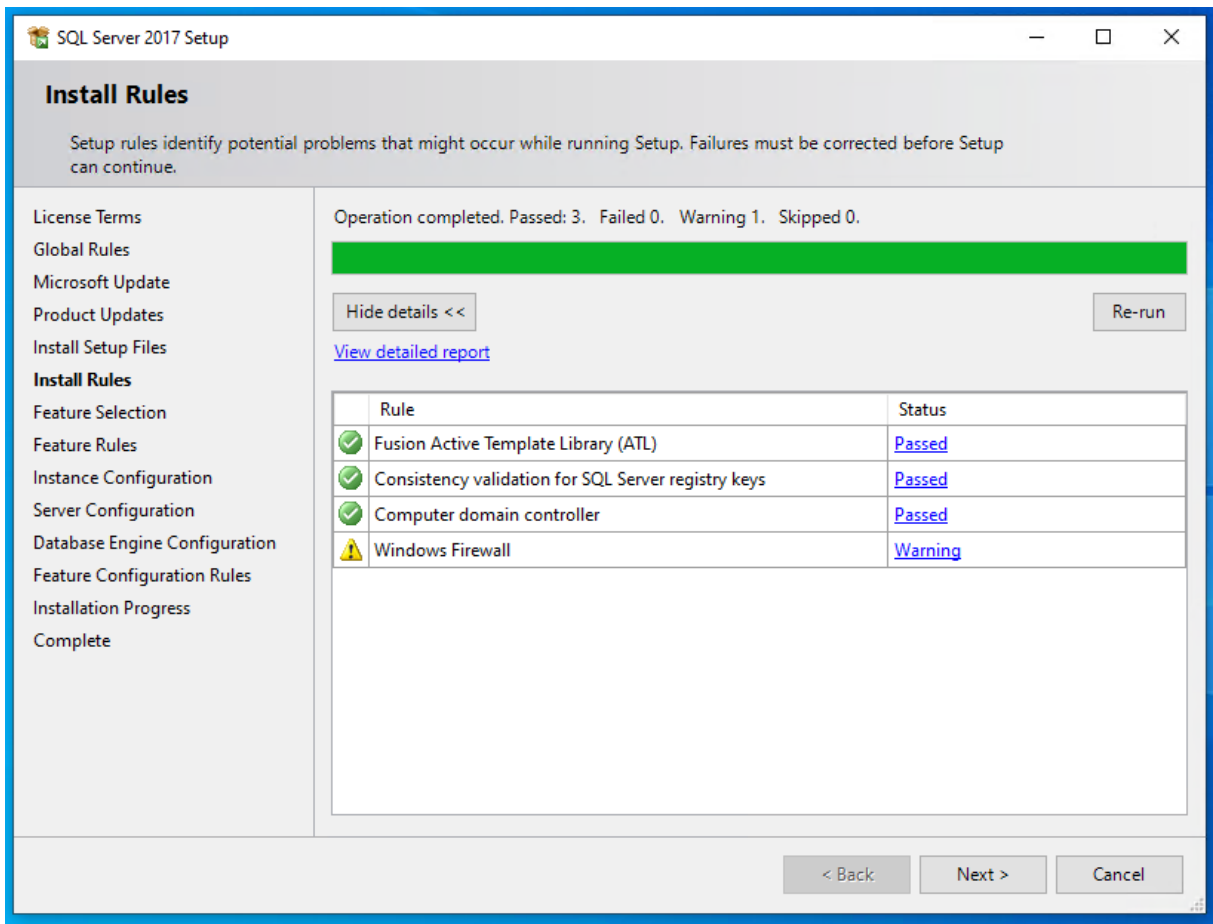
- Check the box next to "I accept the license terms." and click Next



- Check the "Use Microsoft Update..." box and click "Next"

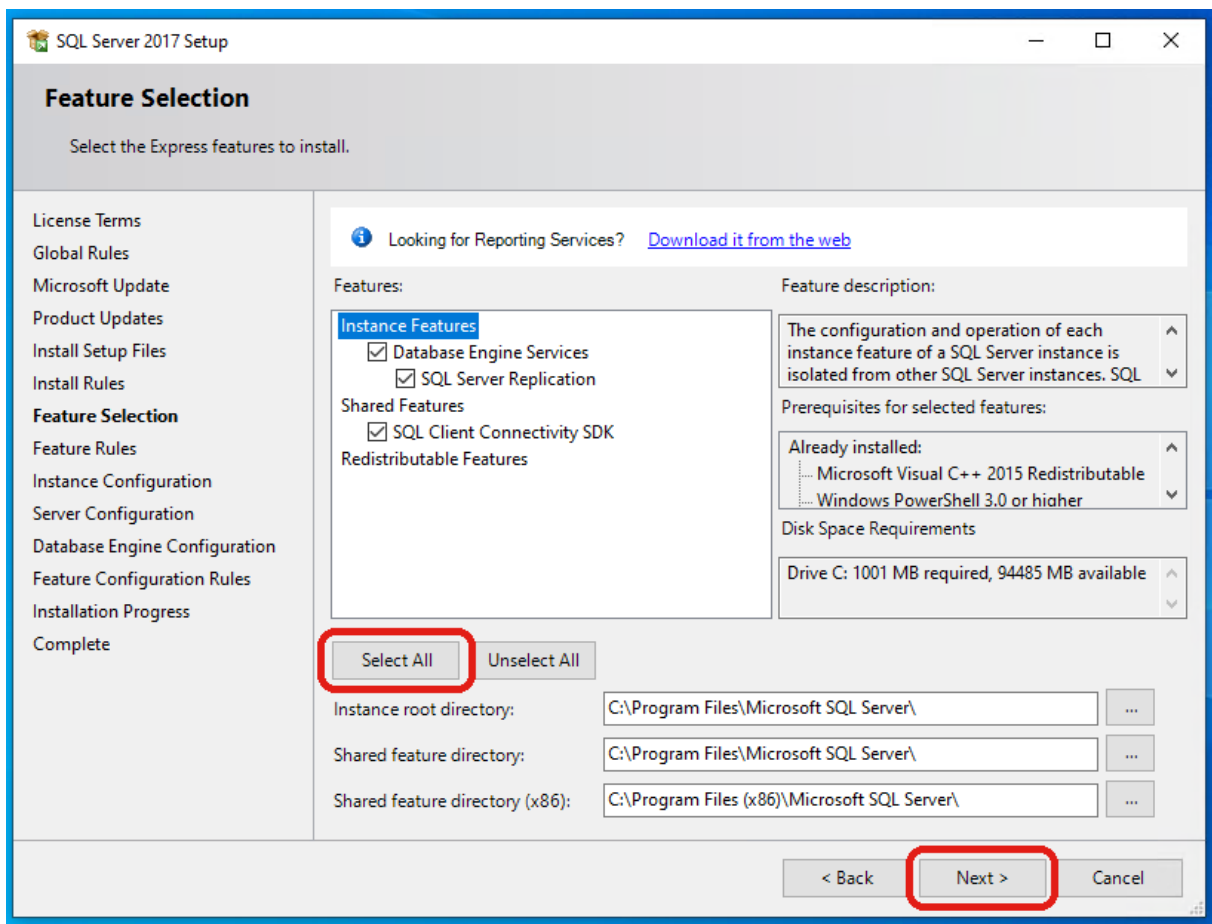


- "Windows Firewall" will likely give a warning, but it's expected - click "Next"



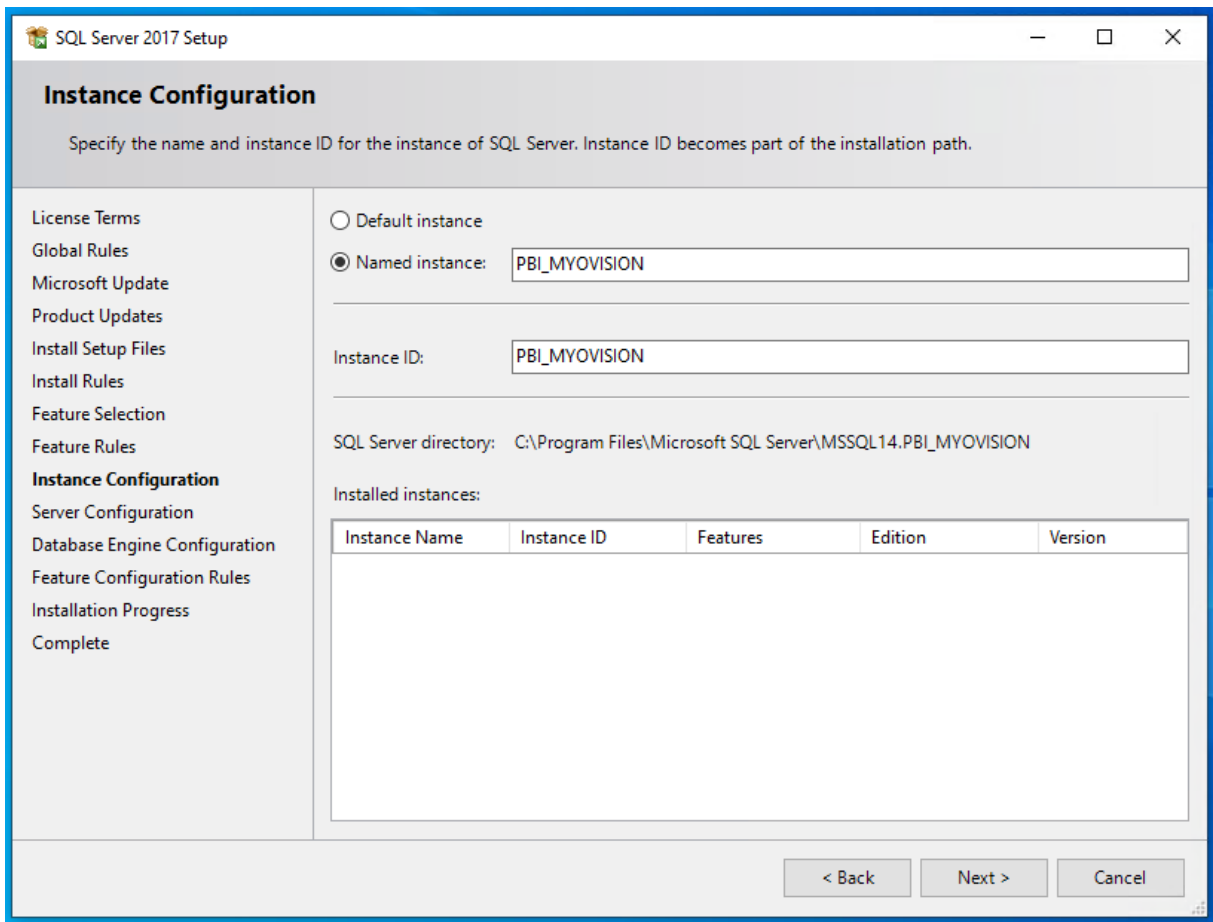
4. Feature Selection

- Click "Select All" then click "Next"



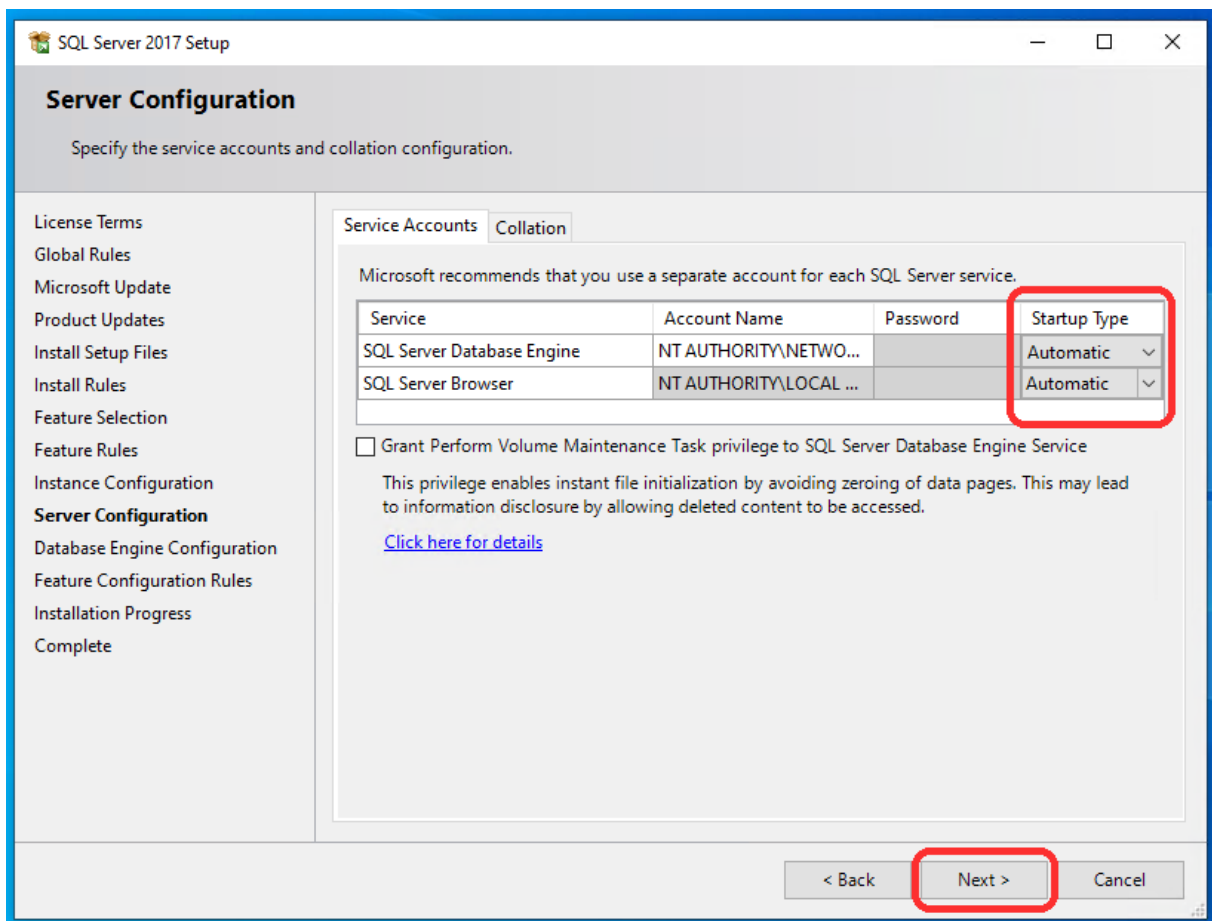
5. Instance Configuration

- Change "Named instance" to **PBI_MYOVISION**
- **Important:** The named instance must read exactly as shown, and the "Instance ID" should match after clicking out of the "Named Instance" text field
- Click "Next"



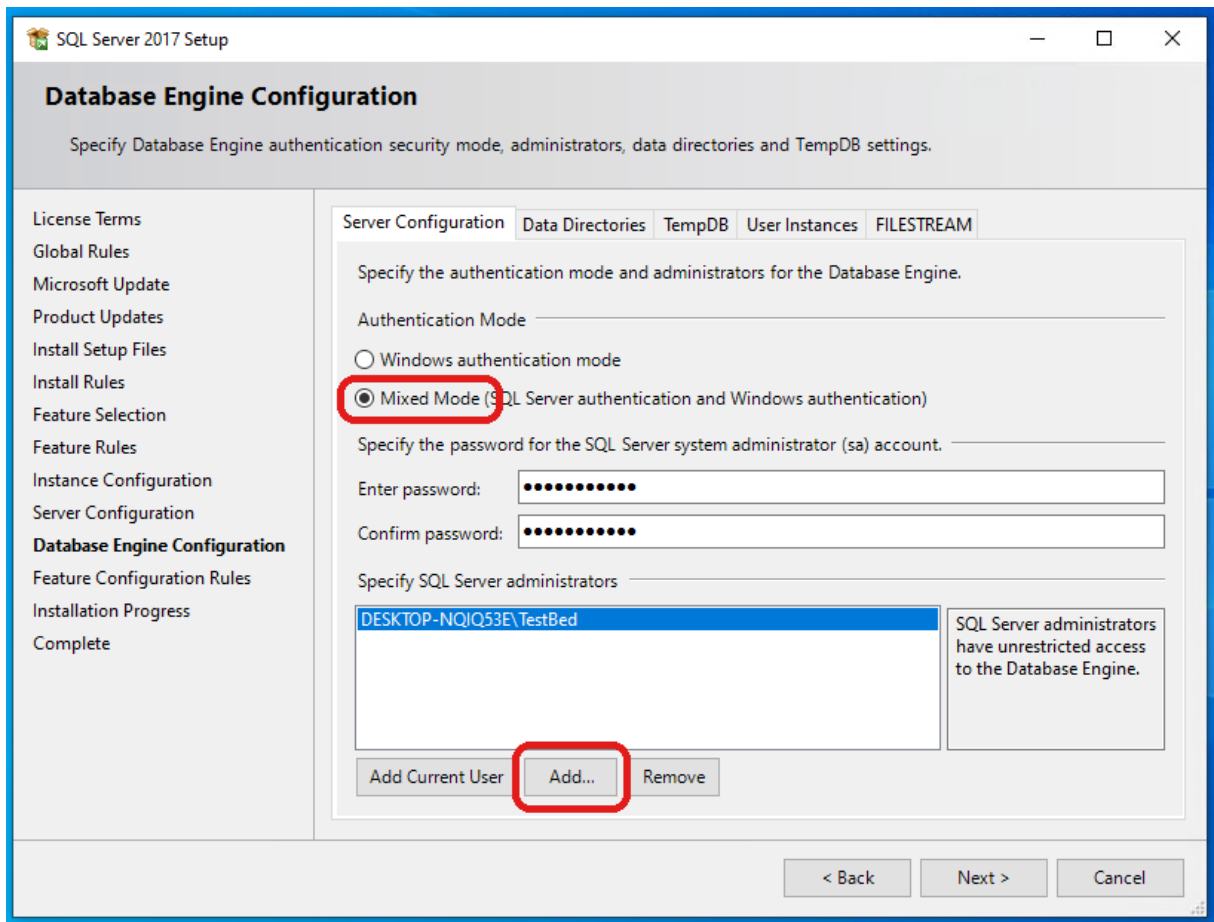
6. Server Configuration

- Make sure "Startup Type" is set to "Automatic" for both Services

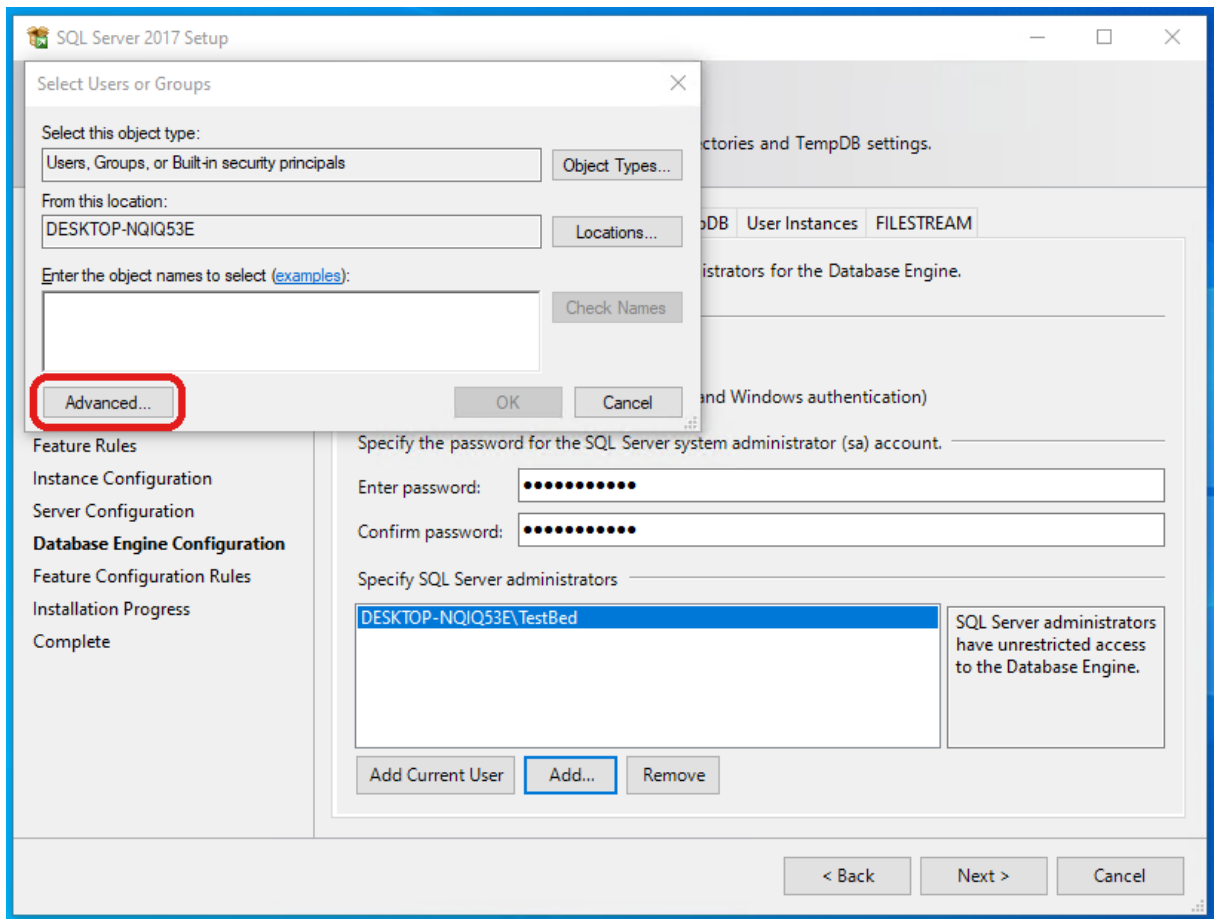


7. Database Engine Configuration

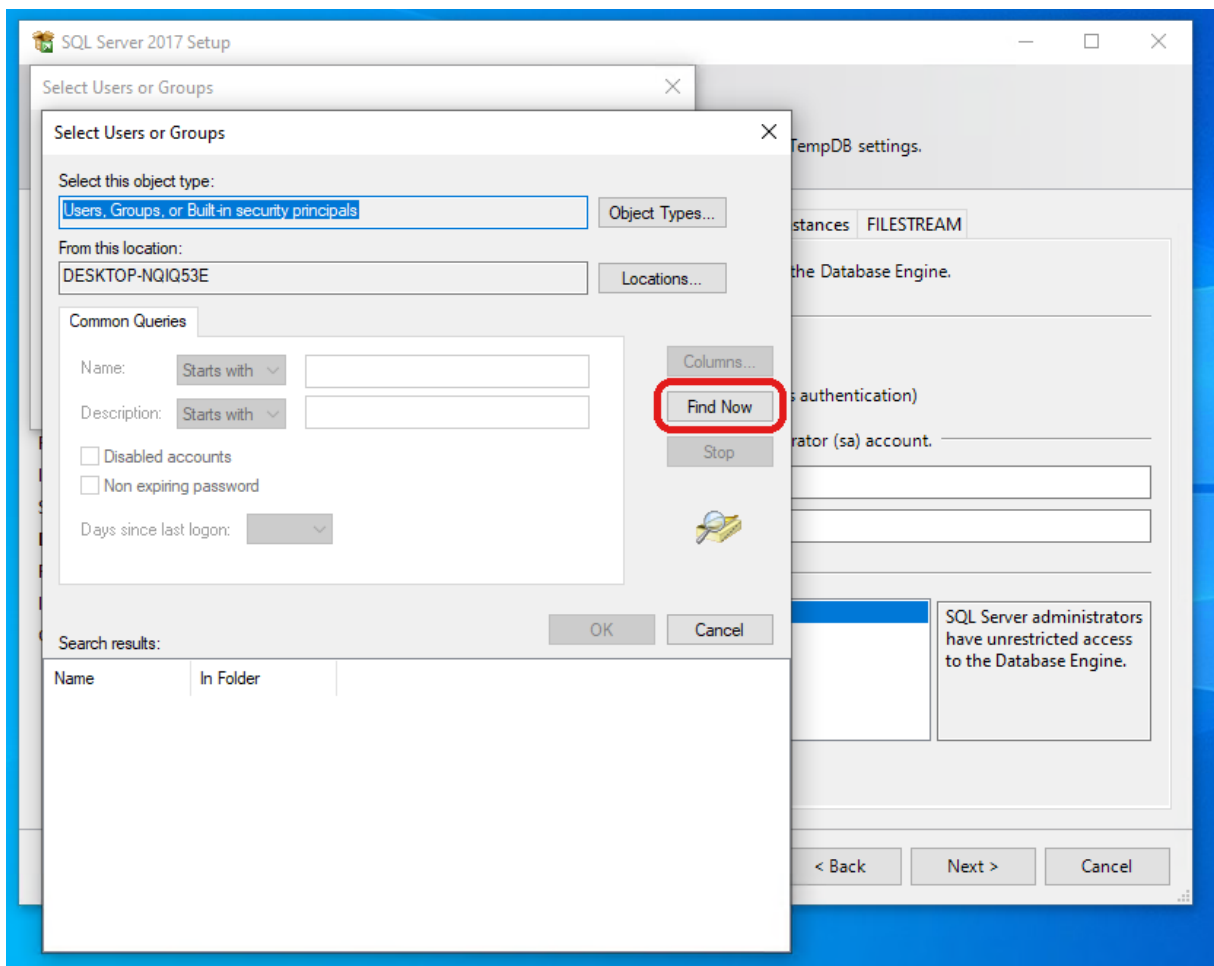
- Select "**Mixed Mode**" for Authentication Mode.
- Set the password to **MyoVision01** for both fields. **Be careful typing/pasting the password into this field. There is no way to change it after installing**
- Then click "**Add**"



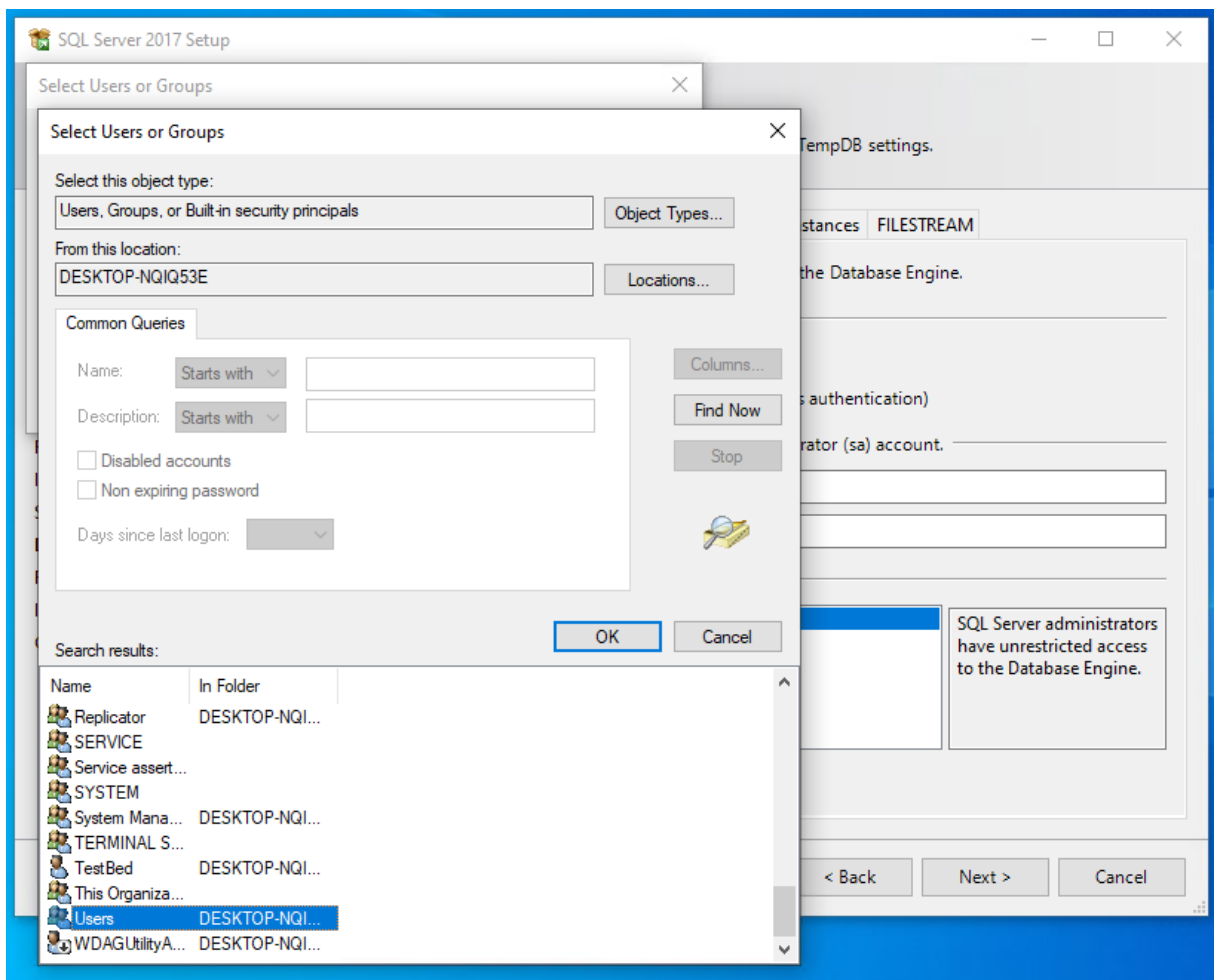
- The following screen will pop up. Then click "Advanced"



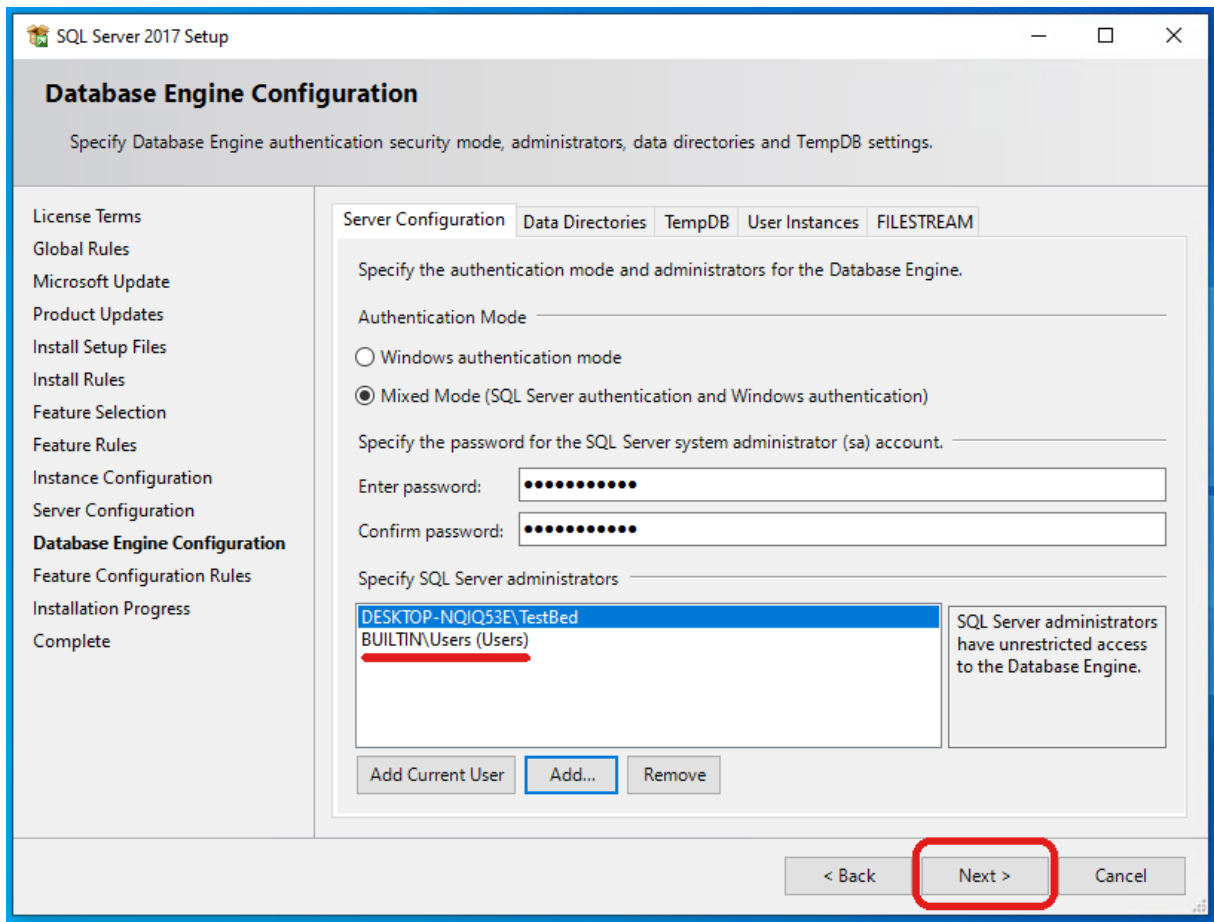
- Click "Find Now"



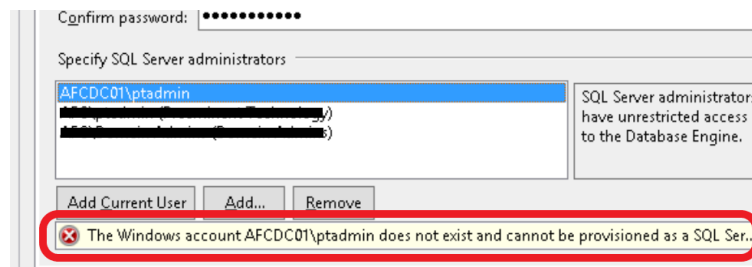
- Click on any name in the search results and quickly type "Users" and select that result. Then click "OK"
- **Note:** If a "Users" account does not exist, look for **Domain Users** or other group that ends in **Users**



- Click "OK" on both "Select Users or Groups" windows. Once you're back to the installer, make sure the Users account is added before clicking "Next". It may take a moment to add and the name may be different if a Domain User or other group user account was added.

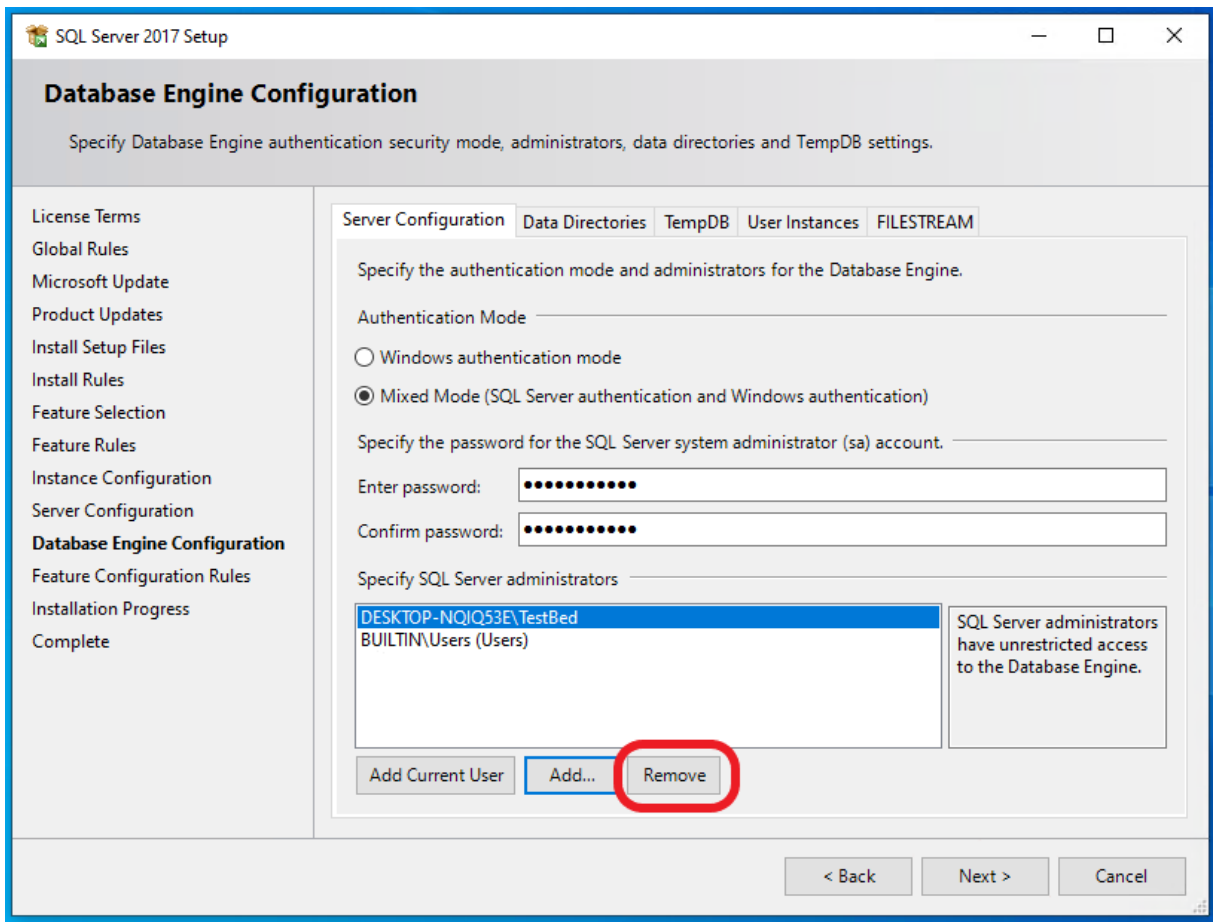


IMPORTANT (ONLY IF ERROR MESSAGE BELOW APPEARS, Otherwise skip to step 8):

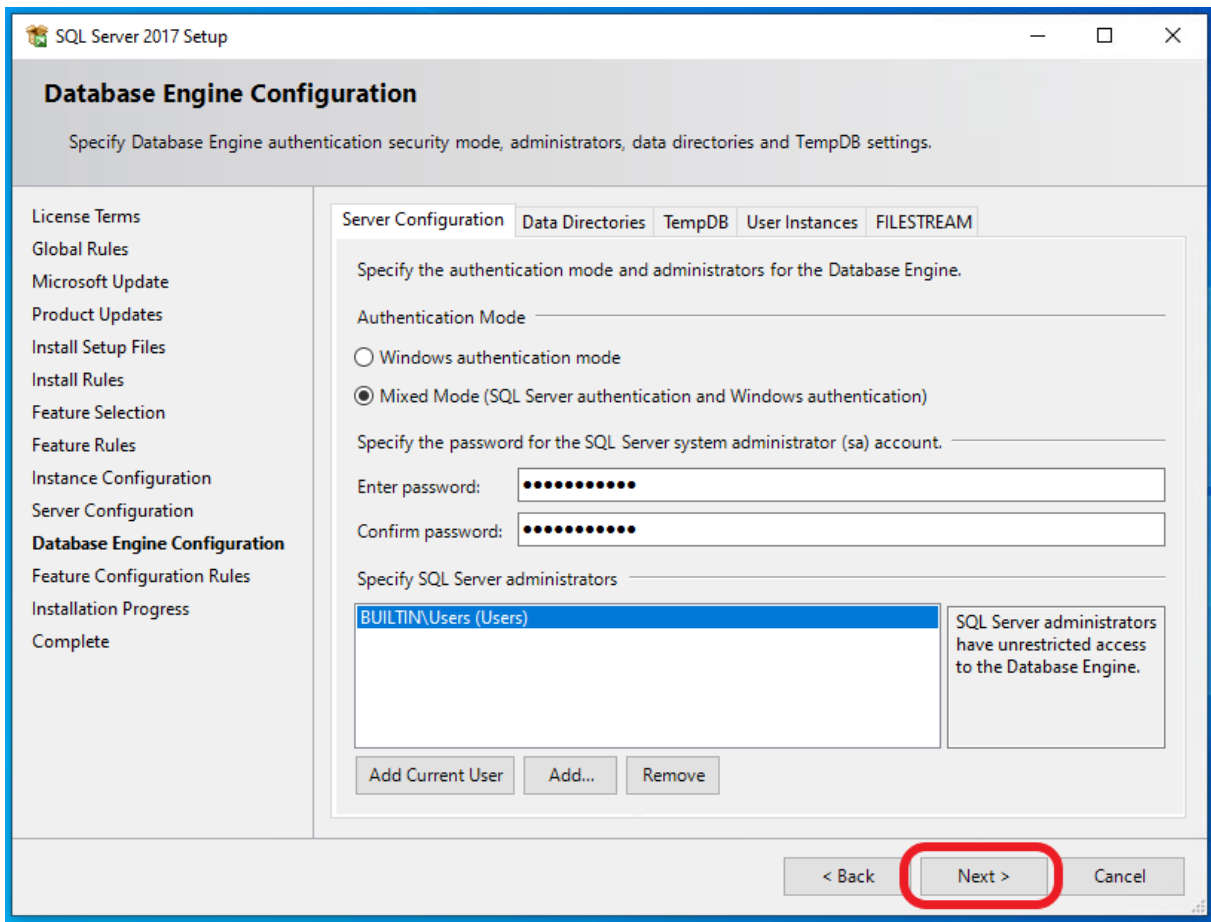


Some user accounts are not considered valid by SQL Server, if an error message appears that the user account is not valid when clicking "Next" then follow instructions to remove the current user account. .

- Select the user account
- Click "Remove"

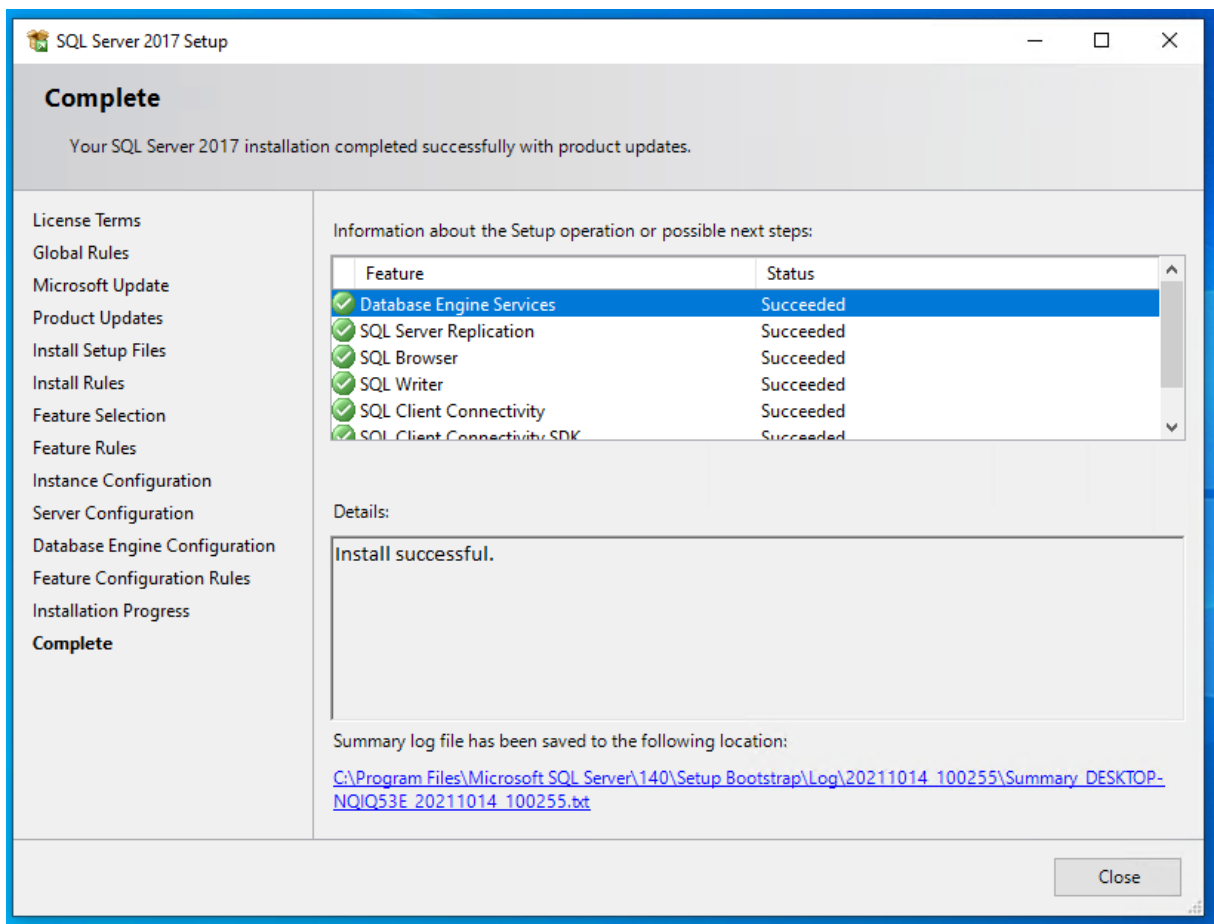


- The only account left should be the user account added (Example: BUILTIN\USER)
- Click "Next"



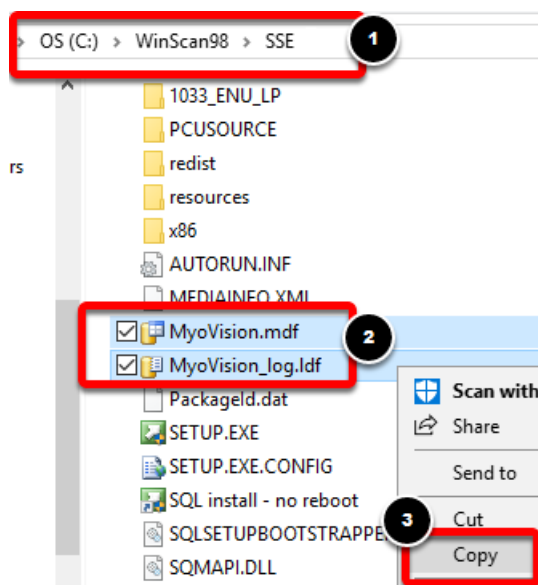
8. Complete

- You should have all green check marks on this screen. Click "Close"



9. Move the Default Database Files

- Navigate to **C:\WinScan98\SSE**. Hold down the Control (Ctrl) on the keyboard and left click both the **MyoVision** and **MyoVision_log** files to highlight. Right-click and select **Copy**.



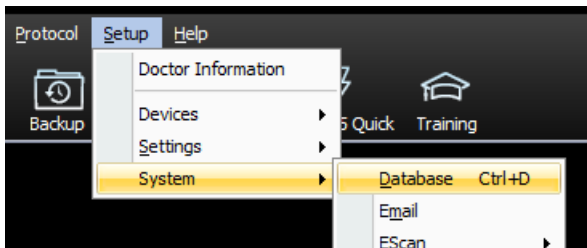
- Navigate to **C:\ProgramFiles\Microsoft SQL Server\MSSQL14.PBI_MYOVISION\MSSQL\DATA**
- Right-click in the **DATA** folder and select **Paste**.

This PC > Local Disk (C:) > Program Files > Microsoft SQL Server > MSSQL14.PBI_MYOVISION > MSSQL > DATA

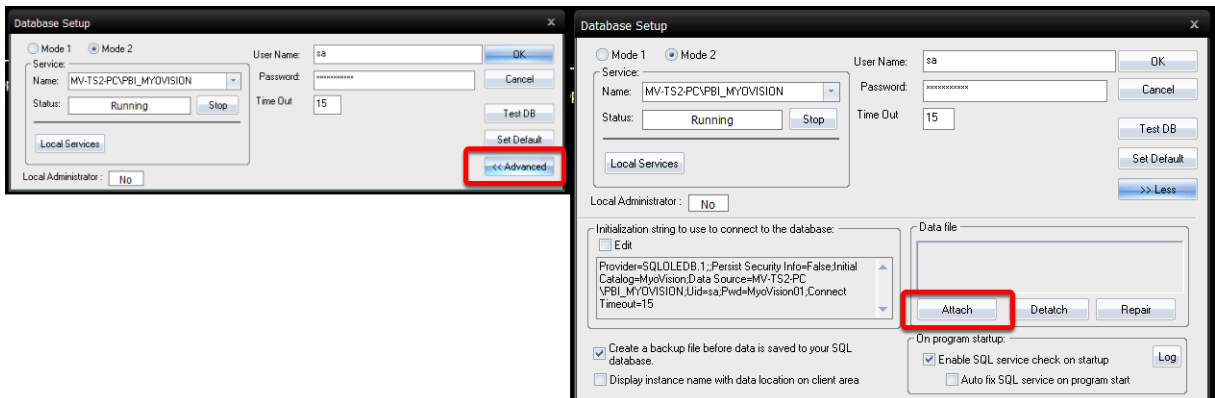
Name	Date modified	Type	Size
master	021 9:54 AM	SQL Server Databa...	4,096 KB
mastlog	021 9:54 AM	SQL Server Databa...	2,048 KB
model	021 9:54 AM	SQL Server Databa...	8,192 KB
modello	021 9:54 AM	SQL Server Databa...	8,192 KB
MSDBD	021 9:54 AM	SQL Server Databa...	15,040 KB
MSDBLo	021 9:54 AM	SQL Server Databa...	768 KB
MyoVisi	021 10:18 AM	SQL Server Databa...	4,096 KB
MyoVisi	021 10:18 AM	SQL Server Databa...	4,672 KB

10. Attach the Data File in MyoVision

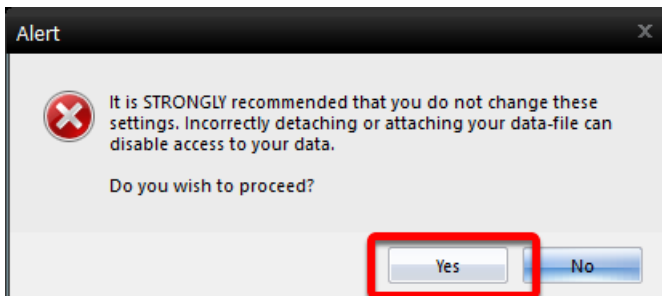
- Open the MyoVision software. Go to **Setup -> System -> Database**



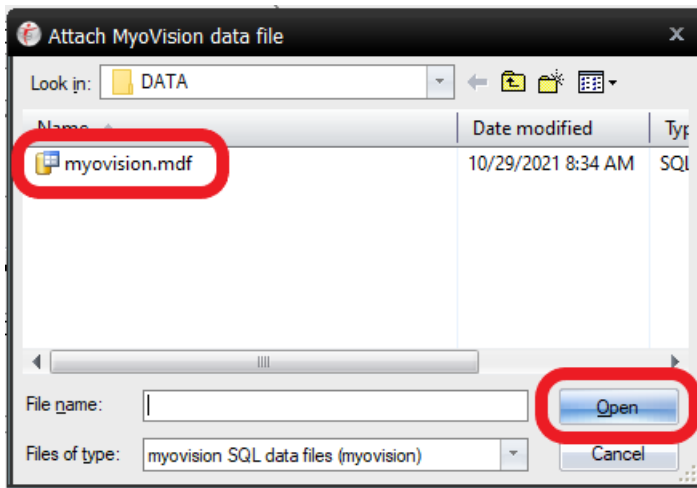
- Click the "Advanced" then click the "Attach" button



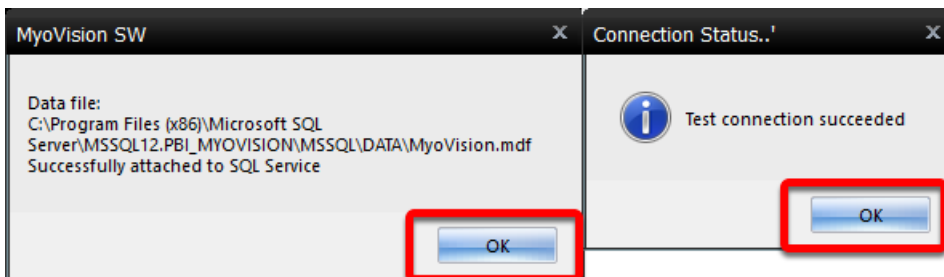
- When the alert pops up, select "Yes"



- Select the **myovision** or **myovision.mdf** file and click "Open"



- The software should tell you that the data file is attached and the database test succeeded



Need to setup MyoVision? See our helpful support articles below

- [How Do I Enter my Software Registration Key?](#)
 - [Configuring Your MyoVision Software for Single or Dual Scanners](#)
 - [Setting Up EScan](#)
 - [Customize the EScan Message](#)
 - [How Do I Enter My Thermography Calibration Values?](#)
 - [How Do I Set Up My Wired Thermography Devices?](#)
 - [Configuring a Network Database in Your Office for MyoVision](#)
-